



REALTEC
GROUPE

2017



www.realtec-groupe.com



COMPANY HISTORY

The REALTEC GROUPE is a French company that was born of the recurring needs of industrial customers, their subcontractors and general contractors. Consequently, we have brought together technicians from plant shutdown companies, subcontracting companies and industrial service providers so as to pool and optimise their expertise needed for project preparation, project fulfilment and project supervision. The REALTEC GROUPE's development is based on demand and feedback. Always with the aim of meeting demand, the REALTEC GROUPE offers additional services through its subsidiaries.

The REALTEC GROUPE is characterised by its ability to adapt to the changes in today's industrial world.

- **2009**, the REALTEC GROUPE is founded
- **2010**, creation of a subsidiary in Romania, SETI.
- **2011**, REALTEC GROUPE creates an agency in MARTIGUES and adds inspection and non-destructive testing to its services. The objective is always to offer customers complete and comprehensive services.
- **2012**, REALTEC GROUPE creates an agency in Le Havre and obtains permission to conduct industrial x-rays.
- **2013**, REALTEC GROUPE formally sets up its industrial dismantling business. This business uses the resources of the Romanian subsidiary to perform the work.
- **2014**, REALTEC GROUPE creates a subsidiary in the Netherlands, REALTEC-NL, so that it can work for our customers in the Netherlands and Belgium.
- **2015**, REALTEC GROUPE consolidates its presence in unit shutdowns by providing assembly work and metal working.
- **2016**, REALTEC GROUPE sells its non-destructive testing business to strengthen its workforce. The Technical Assistance division becomes Technical Expertise. Pressure equipment fabrication and steel frame activities are transferred to the Romanian subsidiary.
- **2017**, REALTEC GROUPE creates a subsidiary in Belgium, so that it can work for our customers.

- The REALTEC GROUPE's organisation is based on the strong services offered by our business.
- The REALTEC GROUPE's operation is fast, direct and flexible.
- All of our employees are permanent or on fixed-term contracts and we do not use temporary or casual workers on site.
- All our employees are covered by French law, no secondments.
- No workplace accidents recorded for the last 7 years and our ongoing objective is zero accidents.
- Every year, we invest in staff training. The areas where we are constantly improving include flexibility, specialist skills and technical monitoring so that we are always informed of the latest techniques and technologies and language learning.



- *Our areas of expertise: technical professions.*

We have technicians who specialise in manual and automatic valves, instrumentation, column internals, furnaces, reactors and inspections.

- *Our worksite teams: column works, dismantling, assembly work, piping works, metal working.*

We operate in France and abroad for all our customers on new projects, maintenance projects and dismantling sites.

- *Our speciality in terms of petrochemical plant shutdowns is the assembly of column internals and upgrading columns, together with all the associated metal working.*

Historically, this was the first activity to be developed at the request of our customers.

- *Our strengths: our presence in France and Eastern Europe. We have partnerships or strong ties with leading French and foreign companies.*

We can therefore take advantage of significant resources when necessary. We use the ports of Constanta in Romania and Vlissingen in the Netherlands and their associated yards for our work in assembling complete furnaces to leave by barge, constructing equipment that cannot be transported by road and large-size skids. Our technicians, who are specialists in their fields, are a major asset for our services. It is based on their skills that the REALTEC GROUPE continues to develop and convince new customers to work with us.

- *The REALTEC GROUPE offer can be adapted and fully modified to offer the perfect response to our customers. We offer a quality service that meets the current demands of our customers.*

- *Our responsiveness, our bases in Eastern Europe and our facilities in France, the Netherlands and Belgium mean that we can quickly respond to demands and guarantee knowledge of local regulations. Several of our services can be combined to provide a comprehensive offer to facilitate project management for customers or we can work in just one of our specialist fields.*

THE REALTEC GROUPE OFFER

1 - TECHNICAL EXPERTISE

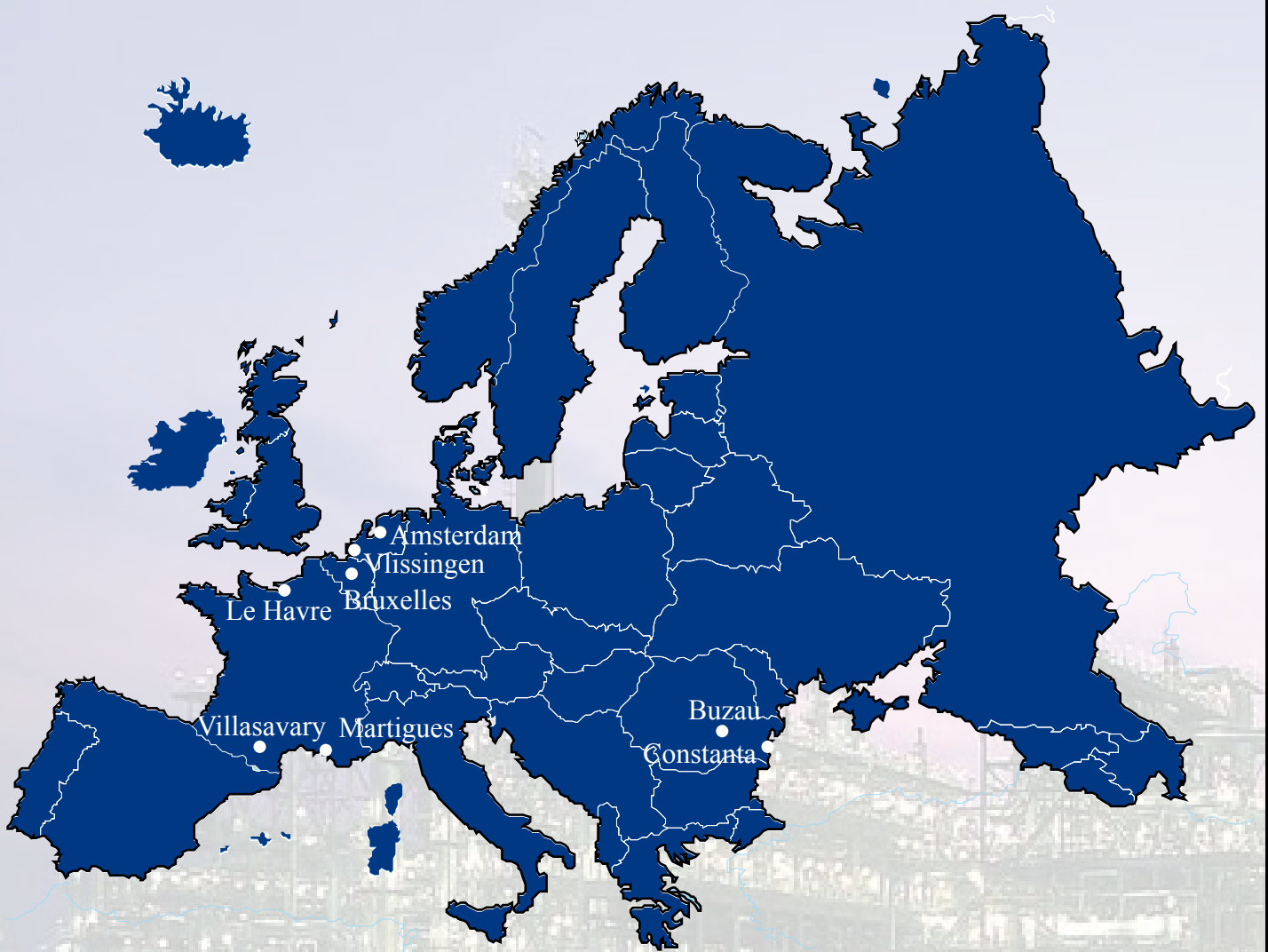
2 - EXECUTION OF WORKS

3 - DISMANTLING

Structured around these 3 fields, we can offer a comprehensive package or just the required service.



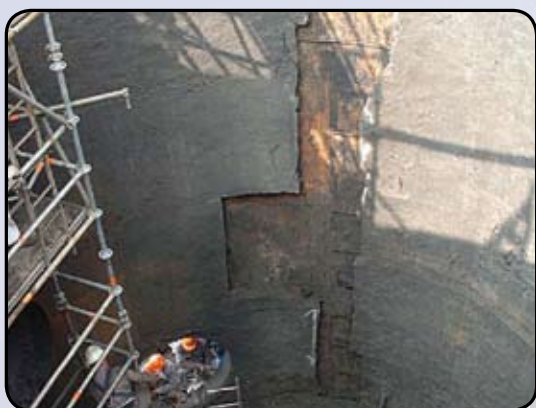
LOCATIONS





1 - TECHNICAL EXPERTISE

- Our specialists work in the fields of instrumentation, valves, furnaces, reactors, refractory concretes and columns. They can provide their expertise when opening up equipment at working units, perform one-off assignments during the design phase for a new project or be integrated into a maintenance or project team over the long- or medium-term, in France or abroad.
- We have management, preparation and scheduling tools and a complete database for costing and estimating works so that we can define and refine a business or project budget.
- We have a database containing suppliers in all fields that can be used for sourcing or changing subcontractors.
- We produce specifications in accordance with the customer's demands and technical requirements and we monitor the technical and financial alignment process right up to fabrication and final acceptance.
- Our technical expertise is based on the desire to offer a quality service that fully meets customer requirements, not just by incorporating project-specific demands, but also by suggesting other compatible and controlled options.





METAL WORKING - PIPING - BOILERMAKING - VALVES - INSTRUMENTATION

PREPARATION - SUPERVISION - EXPERTISE

All types of manual valves (gate valves, plug valves, globe valves, accessories), safety valves (with pneumatic/electrical/hydraulic actuator), spring-loaded and pilot-operated safety valves, pressure/vacuum breakers, check valves, ejectors, heaters, glass level gauges, accumulators, anti-pulsator cylinders, Onis line blinds, special valves, dampers, spherical or flap valve sample outlets.

All types of automatic valves (regulating valves, cut-off valves), safety valves (with pneumatic/electrical/hydraulic actuator)

- Anticipating and cataloguing demands
- On-site visits and surveys
- Accurate definition of the equipment and valve types
- Checking equipment compliance (in line with specifications, assembly and metal working requirements, etc.)
- Defining the resources to be used (lifting, access, etc.)
- Full replacement case study (until final sign-off)
- Ensuring equipment reliability
- Examining and assessing the condition of installed valves from repair records from prior shutdowns and making recommendations
- Defining the work to be done and the best economic choices based on the condition of the equipment and its history
- Defining related work with other professions
- Taking account of resilience issues on cast steel
- Anticipating non-conformities (during assembly, operation, etc.)
- Estimating the financial cost of the works depending on the customer's strategy
- Writing requisitions or specifications for disassembly/reassembly depending on the customer's in-house strategy
- Establishing and checking valve purchasing data
- Establishing and checking purchasing specifications and requisitions
- Preparing lists of equipment to be replaced in accordance with the customer's specifications
- Summarising purchasing requests and warehouse reservations
- Reviewing and selecting supplier and manufacturer bids
- Establishing specifications or requisitions for work in the workshop and on-site
- Checking and accepting equipment ordered (at the manufacturer, at the warehouse)
- Preparing a schedule for the different works
- Supervising on-site works
- Supervising workshop repairs
- Reporting and progress monitoring
- Technical acceptance and validating workshop work
- Presence and acceptance during tests
- Technical report for history



INTERNAL FITTINGS: COLUMNS - REACTORS - TANKS

PREPARATION - SUPERVISION - EXPERTISE

On site :

- Accepting, checking and assisting with the pre-assembly of delivered components
- Visits and providing expertise during shutdowns to anticipate work and confirm technical points
- Inventory of stored parts at the on-site warehouse, regardless of brand
- Inventory and sorting of on-site documentation, regardless of brand
- Accepting internal components manufactured at the supplier's workshops with inspections and checks
- Taking thermal readings during operation to define and look for operating issues
- Taking part in defining a project's processes
- Supervising assembly works during shutdown
- Accepting, checking and assisting with the final assembly of internal components
- Final report

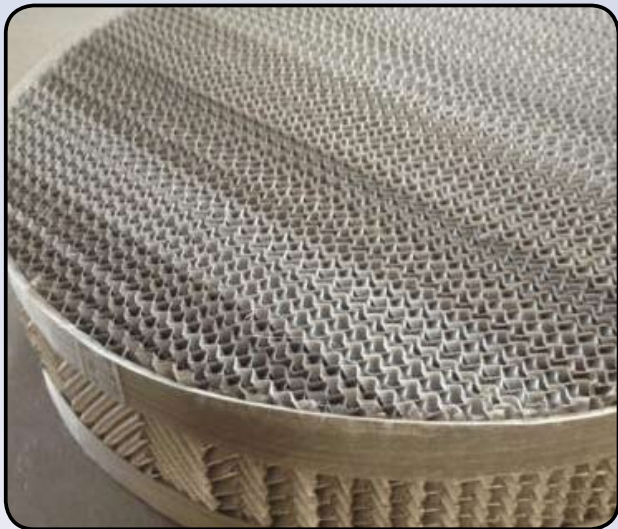
For preparation - studies - design processes

- Technical recommendations for shutdowns
- Financial estimates for the supply and assembly on site
- Producing work schedules for disassembly/reassembly works and upgrade work included (metal working, piping, etc.)
- Handling internals replacement projects or upgrade projects by consulting with suppliers and contracting companies up to completing the works
- Producing plans after the works to update the customer's technical database

FURNACES: UPGRADES

PREPARATION - SUPERVISION - EXPERTISE

- Providing expertise during operation and shutdown to define and anticipate works (casing, boiler, etc.)
- Taking part in project studies and definition work
- Producing equipment requisitions (furnace, convection modules, radiation beam, etc.) and work requisitions (on-site assembly, upgrades)
- Producing purchase requisitions for components: tubes, elbows, intermediate tube plates, etc.
- Supplier consultations
- Monitoring fabrication for compliance with the customer's schedule and specifications
- Accepting equipment prior to shipping to the assembly site
- Monitoring the worksite in terms of compliance with supplier recommendations and customer specifications
- Handling construction or upgrade projects by consulting with suppliers and contracting companies, up to completing the works
- Auditing suppliers and monitoring the fabrication process
- Looking for hot spots with detailed reports





SPECIAL SERVICES

SOURCING :

Looking for fabrication subcontractors (boilermaking, piping, etc.), performing the work (new project - maintenance work : shutdown) Taking account of requirements, prospecting, preparatory visits, presenting options, arranging on-site visits and attending meetings.

COSTING WORKS :

Costing new and maintenance works in accordance with the project and providing an estimate of the hours required or the cost, comprising on-site visits, site access arrangements, taking photographs, producing device forms and summary tables.

COST CONTROL :

Financial management and cost controls for new projects or maintenance work. Taking account of any contractual schedule and specifications.

Monitoring the works using the customer's IT tool or REALTEC GROUPE documents

The prerequisites for these services are:

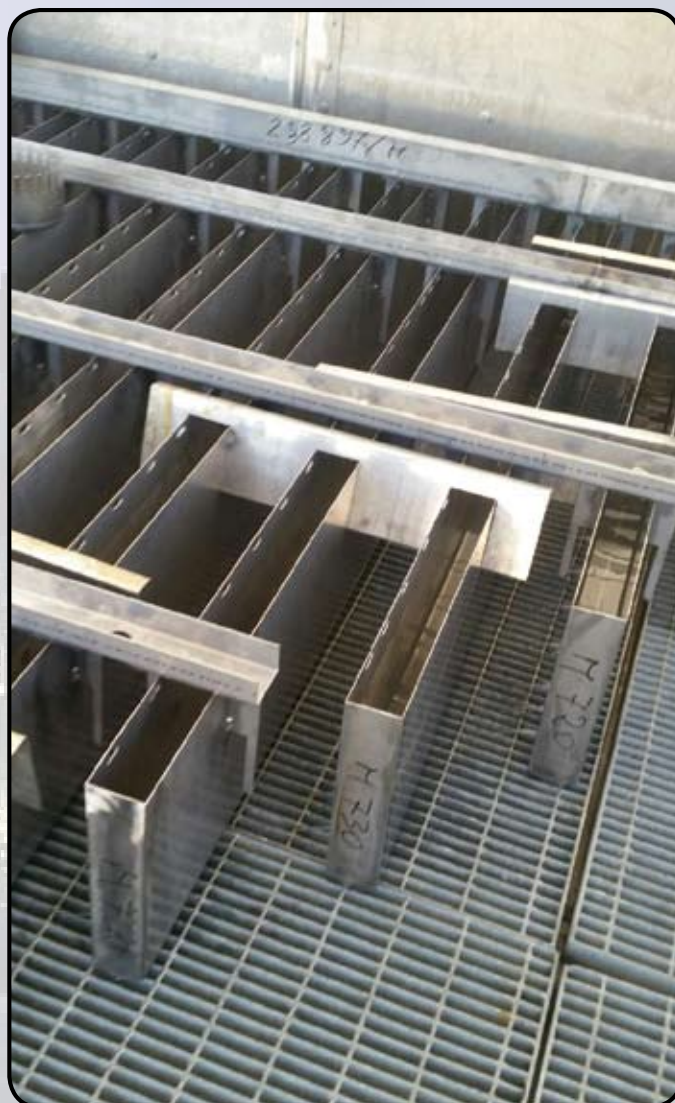
- An ethical approach (position of judge and jury)
- A specific non-competition agreement (to avoid placing a number of customers with the same subcontractor)



2 - EXECUTION OF WORKS

- We provide teams of professionals who are familiar with European industrial facilities. Safety is paramount and because our customers expect their deadlines and quality requirements to be met, our teams attend safety training and vocational courses in France in order to maintain a quality level while taking into account any new requirements expressed by our customers.
- Our assembly teams specialising in column internals install next-generation internals during upgrade work and for maintenance operations by handling all the trades required: metal working, assembly and decoking and manual cleaning. We guarantee schedule and cost management.
- We work on tanks, valves, exchangers and all types of equipment for petrochemical facilities.
- In some cases, we are also involved in the workshop assembly of skids and furnaces so that we can track the shipped equipment and perform the final assembly on-site in accordance with the procedures and work rules applied in the workshop. This enables the workshops to keep their production staff in the workshop, while knowing that the team that will assemble the equipment on-site understands the equipment and the manufacturer's procedures.
As a result, the site/workshop relationship is clearer and faster in terms of project management, scheduling and any changes.
- We have teams specialising in performing unit shutdowns.
These teams perform piping and assembly work as well as boilermaking. All our staff and management have the required approvals. The company is approved for European sites.
- We work on storage tanks to carry out repairs and manual cleaning.
- We are currently developing a sandblasting/painting unit following many requests from our customers.







3 - DISMANTLING

- We operate in Europe, primarily in France and Romania, in dismantling metal frame units and buildings.
- When dismantling units, we apply the same methods that are used in their construction. This means that all items are identified, dismantled, cleaned and stored so that customers can simply and easily recycle the dismantled items. We use the same personnel as for new projects and apply the same safety and environmental management rules (products, pollution).
- Buildings are often dismantled with a view to reusing the structure for other projects with certain modifications to adapt the structure.
- We also dismantle large-scale skids at the end of their life and can dismantle production platforms brought to the quayside to be recycled or destroyed. To do this, we work in fully-equipped and appropriately-sized yards in the ports of Dunkirk (FRANCE), Vlissingen (NETHERLANDS), Constanța (ROMANIA) and others if requested.
- The issue of asbestos is common during dismantling work. In order to deal with this we have staff trained in asbestos handling and we work in partnership with a French company specialising in asbestos removal with assistance from our teams. This enables us to deal with the issue in full compliance with European and French regulations.





OUR MAIN REFERENCES AT 31/12/2016

1- TECHNICAL ASSISTANCE

- 2016 : **TOTAL NORMANDY** : Reception and pre-assembly assistance for new column internals. KOCH GLISTCH workshop, Italy, ROME.
- 2016 : **Air Liquide** Normandy and Paris: Preparation for shutdowns in different sites and units.
- 2016 : **APAVE INTERNATIONAL** : Monitoring equipment fabrication for AREVA.
- 2016 : **PETROINEOS LAVERA** : Supervision of works during the shutdown of FCC.
- 2016 : **TOTAL LA MEDE** site : Preparation works for the 2017 shutdown, integration of the Phoenix project.
- 2015 : **Air Liquide Normandy and Paris** : Preparation for shutdowns in different sites and units.
- 2015 : **TOTAL LA MEDE** site : Preparation works for the 2017 shutdown, integration of the Phoenix project.
- 2015 : **APAVE INTERNATIONAL** : Monitoring equipment fabrication for AREVA.
- 2015 : **PETROINEOS LAVERA** : Preparation for the shutdown of the FCC, D5 and DSV3.
- 2015 : **AIR LIQUIDE TONKIN** Site : Preparation and supervision of shutdown of the FOS SUR MER and ASCOMETAL units.
- 2014 : **APAVE INTERNATIONAL** : Monitoring equipment fabrication for AREVA.
- 2014 : **VENCOREX PONT DE CLAIX** plant : Supervision of shutdown works.
- 2014 : **Air Liquide Normandy and Paris** : Updating PIDs and preparation for unit shutdowns.
- 2014 : **TOTAL LA MEDE** refinery : Supervising work during the major shutdown.
- 2014 : **Air Liquide Nantes** : Surveying automatic valves during shutdown.
- 2014 : **ADF** : Preparation works for the **TOTAL ZEELAND** shutdown (NETHERLANDS)
- 2014 : **EMIS PONTICELLI** : Scheduling for the BUTACHIMIE shutdown.
- 2013 : **Air Liquide** : Preparation of shutdown works. Producing specifications for consultation and scheduling the works.
- 2013 : **TOTAL LA MEDE** refinery : Piping and equipment inspections prior to shutdown.
- 2013 : **ENDEL** : Production and management of the schedule for the TOTAL FEYZIN shutdown.
- 2013 : **APAVE INTERNATIONAL** : Monitoring the equipment fabrication files for ALSTOM POWER SERVICE LEVALLOIS
- 2013 : **VENCOREX PONT DE CLAIX** plant : Preparation and monitoring of unit shutdown works
- 2013 : **TOTAL LA MEDE** refinery : Preparation works for the major 2014 shutdown.
- 2012 : **AIR LIQUIDE FOS SUR MER** plant : Preparation of shutdown works for a hydrogen production unit
- 2012 : **TOTAL LA MEDE** refinery : Surveying columns during shutdown works.
- 2012 : **ALSTOM GRENOBLE** workshop : Monitoring equipment fabrication for the nuclear industry.
- 2012 : **IEFFEL BERRE** agency : Production of regulatory documents for piping repairs for the NAPHTACHI-MIE shutdown
- 2012 : **APAVE INTERNATIONAL** : Monitoring equipment fabrication for AREVA nuclear plants.
- 2012 : **TOTAL LA MEDE** refinery : Inspections during shutdown works.
- 2012 : **PONTICELLI GRENOBLE** agency : Preparation and monitoring of unit shutdown works
- 2012 : **ADF TOTAL NORMANDY** worksite : Surveying columns during unit shutdown.
- 2012 : **TOTAL GRANDPUITS** refinery : Preparation for automatic valve works and monitoring assessments in the workshops.
- 2012 : **SANOFI SISTERON** plant : Preparation and monitoring of factory shutdown works.
- 2012 : **ALSTOM POWER SERVICE LE HAVRE** : Performing non-destructive testing in workshops.
- 2012 : **AIR LIQUIDE FOS SUR MER** plant : Preparation of automatic valves for the unit shutdown.
- 2012 : **HEURTEY PETROCHEM ROMANIA** plant : Monitoring of the convection system fabrication for unit shutdown works at TOTAL.
- 2012 : **I-PAPER LIMOGES** paper mill : Preparation of instrumentation works during factory shutdown.
- 2012 : **TOTAL LA MEDE** refinery : Supervising major shutdown works.
- 2011 : **INEOS FELUY** refinery (Belgium) : Management of the shutdown preparations and overseeing the shutdown works.
- 2010 and 2011 : **TOTAL LA MEDE** refinery : Piping and equipment inspections prior to shutdown.
- 2011 : **EDF LE HAVRE** plant : Piping inspections before the shutdown and during unit shutdown.
- 2011 : **TOTAL FLUIDE LE HAVRE** plant : Piping inspections prior to shutdown.
- 2011 : **AIR LIQUIDE FOS SUR MER** plant : Preparation of shutdown works for a hydrogen production unit.
- 2011 : **RUBIS CARAIBES** petroleum depot : Surveys and plans for a storage tanks and the related piping network.
- 2011 : **TSI** : Complete survey of a thermal power station in Conakry, Guinea for redevelopment and modernisation works.
- 2011 : **AIR LIQUIDE** Port Jérôme : Supervision of works on hydrogen furnace during shutdown.
- 2011 : **TSI** : Assistance with starting the diesel engine in a thermal power station in Conakry, Guinea.
- 2011 : **KOCHK GLISTCH** worksite : Surveying columns and assisting with the assembly of internals.
- 2011 : **HEURTEY PETROCHEM ROMANIA** plant : Monitoring of convection system fabrication for the unit shutdown works at TOTAL LA MEDE.
- 2011 : **PONTICELLI GRENOBLE** agency : Preparation of shutdown works and monitoring of works during shutdown.
- 2010 : Barette worksite at **POLIMERI DUNKIRK** : Assisting with the assembly of column internals during shutdown works.
- 2010 : **SMRI MARTIGUES** agency : Survey and management of the repair of automatic valves for the unit shutdowns of TOTAL LA MEDE and INEOS LAVERA.
- 2010 : **PERSTORP PONT DE CLAIX** plant : Assisting with the assembly of column internals using diving suits.
- 2010 : **SMRI** worksite at the **POLIMERI DUNKIRK** plant : Management of shipping and return of valves to repair workshops during the unit shutdown.
- 2010 : **TOTAL LA MEDE** refinery : Preparation of the works for the major 2012 shutdown.



2 - EXECUTION OF WORKS

- 2016 : **ADF** : Assembly works on the columns of the chlorine unit of KEMONE LAVERA. Replacement of internals.
- 2016 : **TEAM INDUSTRIE** : Platinization of the units for the shutdown of the refinery.
- 2016 : **ENDEL** : Metal working on the FCC of PETROINEOS LAVERA. Electro-filter roof replacement, hexmetal replacement, boiler casing replacement.
- 2016 : **EMIS PONTICELLI** : Assembly works on vacuum column of the DSV2 and assembly works on the exchangers.
- 2016 : **FOURE LAGADEC** : Upgrade works on the column of the DEE unit at TOTAL NORMANDY. Replacement of all internals, creation of 2 false shells, replacement of watertight trays, installation of new hoops, creation of inlets, replacement of manholes and repair of cladding.
- 2016 : **EMIS PONTICELLI** : Assembly works on the columns of the VERSALIS DUNKIRK plant.
- 2016 : **SUEZ** : Manual cleaning of a large-scale storage tank at TOTAL LA MEDE.
- 2016 : **EMIS PONTICELLI** : Assembly works on the columns of BUTACHIMIE MULHOUSE.
- 2016 : **FOURE LAGADEC** : Retubing of the furnace convection of the BOREALIS MULHOUSE plant.
- 2016 : **EMIS PONTICELLI** : Assembly works on the columns, tank and exchangers of the SALICILATES unit of LYONDEL BASEL BERRE.
- 2016 : **ADF** : Assembly works on the exchangers of the PP and PE units on the LYONDEL BASEL BERRE site.
- 2016 : **EMIS PONTICELLI** : Assembly works on the columns, exchangers and tanks of the HDT unit of LYONDEL BASEL BERRE.
- 2016 : **FOURE LAGADEC** : Replacement of a vertical exchanger on the NYRSTAR DOUAI site.
- 2016 : **ADF** : Assembly works on the columns, tanks and exchangers of the ALKYLATION at TOTAL LA MEDE.
- 2015 : **EMIS PONTICELLI** : Assembly works on the vapour columns of TOTAL FEYZIN.
- 2015 : **ADF** : Assembly works on the vapour columns of TOTAL FEYZIN.
- 2015 : **EMIS PONTICELLI** : Assembly works on the column internals on the TOTAL DONGES site.
- 2015 : **ADF** : Assembly works on the vapour columns, tanks and exchangers of TOTAL CARLING.
- 2015 : **SUEZ** : Emptying and reloading of reactor at the ARKEMA CARLING plant.
- 2015 : **INDUSTRIAL MONTAJ** : Assembly works on the columns and exchangers and piping works on the PETROMIDIA CONSTANTA ROMANIA site.
- 2014 : **ENDEL** : Metal working during the shutdown of the FCC of TOTAL LA MEDE (replacement of 2 cyclone furnaces).
- 2014 : **ENDEL** : Prefabrication works for 2 "cyclone furnaces" for the FCC of TOTAL LA MEDE
- 2014 : **ADF** : Assembly work and metal working on the columns of the ADF batch at the TOTAL LA MEDE refinery.
- 2014 : **EMIS PONTICELLI** : Assembly work and metal working on the columns of the EMIS batch at the TOTAL LA MEDE refinery.
- 2014 : **KOCH GLISTCH** : Removal of column internals and fitting new internals on the NSF Belgium site.
- 2014 : **ADF** : Works on the column during the shutdown of TOTAL ZEELAND (NETHERLANDS)
- 2013 : **ENDEL** : Piping work and work on the columns during the major shutdown of the TOTAL Feyzin refinery.
- 2013 : **TSI** : GUINEA GOLD MINE: Installation of 8 ALFAVAL Moatti filters with connecting and testing.
- 2013 : **SPAC GAS DEPOT** : Installation of internals for 2 columns.
- 2012 : **ADF** worksite at the TOTAL NORMANDY Refinery :Piping works during the shutdown of Distillation unit 11.
- 2012 : **SPAC GAS DEPOT** : Installation of internals for 2 columns.
- 2012 : **ADF** worksite at the TOTAL NORMANDY Refinery : Removal and refitting works of column internals and associated metal working including: creation of inlets, repair cladding, welding watertight trays, repair supports.
- 2011 : **SPAC GAS DEPOT** worksite : Installation of internals for 2 columns.
- 2010 : **ARKEMA FOS SUR MER** plant : Assembly works to remove and refit the trays in 2 columns.
- 2010 : **SPAC GAS DEPOT** worksite : Installation of internals for 2 columns.



SUPPLY OF EQUIPMENT

Business transferred to Romanian subsidiary

- 2014 : **TEDD** : Fabrication of lightweight stainless steel frame for an R&D mechanism.
- 2014 : **TECMI** : Supply of metal framework for constructing two 700m2 buildings.
- 2014 : **TOTAL LA MEDE** refinery : Supply of stainless steel supporting beam and assembly parts for the D5 furnace at the refinery.
- 2014 : **TOTAL LA MEDE** refinery : Supply of pipes for the availability of the SEM and EAST units of the refinery.
- 2013 : **TOTAL LA MEDE** refinery : Supply of pipes for the availability of the WEST units of the refinery.
- 2012 : **PONTICELLI GRENOBLE** agency : Fabrication and supply of stainless steel ducts for the incinerator.
- 2011 : **TOTAL LA MEDE** refinery : Supply of pipes for the availability of the units of the refinery.
- 2011 : **ENDEL GRAND TRAVAUX** worksite : Fabrication and supply of a radiating array for a circular furnace for shutdown works.

3 - DISMANTLING

- 2016 : **RAFO ROMANIA** plant : Dismantling 4 production units with sorting for recycling.
- 2016 : Port of **CONSTANTA ROMANIA** : Dismantling 7 metal frame buildings.
- 2015 : Port of **CONSTANTA ROMANIA** : Dismantling of a pumping plant, 4 ship loading arms, 3 slop storage tanks.
- 2015 : **CHIMCOMPLEX BORZESTI ROMANIA** plant : Dismantling of 1 brick building, 2 metal frame buildings, 1 production unit.
- 2014 : **CHIMCOMPLEX BORZESTI ROMANIA** plant : Dismantling of metal frame buildings and 2 decommissioned units.
- 2014 : **RAFO Romania** refinery : dismantling of 3 units with sorting and recycling of materials.
- 2013 : **St Louis sugar Marseille** : Dismantling of 2 units.
- 2013 : **TOTAL LA MEDE** refinery : Dismantling of unit.
- 2011 : **TOTAL LA MEDE** refinery : Dismantling of unit.

FABRICATION OF PRESSURE EQUIPMENT

Business transferred to Romanian subsidiary

- 2014 : **Béta Romania** : Fabrication and supply of tanks and columns.
- 2014 : **TOTAL LA MEDE** refinery : Fabrication and supply of an air heat exchanger.
- 2013 : **ECOSLPOS** : Fabrication and supply of pressure equipment for a P2R unit in Portugal.
- 2013 : **TOTAL LA MEDE** refinery : Fabrication and supply of tanks and columns.



Locations



Head office
3A rue de l'Égalité 11150 VILLASAVARY
ccueil@realtec-groupe.com
Tel/Fax: 04 68 76 94 31
www.realtec-groupe.com

Normandy Agency
Route du Hoc - 76600 Le Havre
accueil@realtec-groupe.com

South-East Agency
Z.A.C. de Croix Sainte - 13500 Martigues
accueil@realtec-groupe.com



Société Européenne de Travaux Industriels

Subsidiary in Romania
S.E.T.I. Buzau
home@seti-ro.com



Subsidiary in the Netherland
REALTEC-NL Amsterdam
home@realtec-nl.com



Subsidiary in Belgium
Currently being created
REALTE-BE Bruxelles
home@realtec-be.com



Locations

Head office

3A rue de l'Égalité 11150 VILLASAVARY
accueil@realtec-groupe.com
Tel/Fax: 04 68 76 94 31
www.realtec-groupe.com

Normandy Agency

Route du Hoc - 76600 Le Havre
accueil@realtec-groupe.com

South-East Agency

Z.A.C. de Croix Sainte - 13500 Martigues
accueil@realtec-groupe.com

Subsidiary in Romania

S.E.T.I. Buzau
home@seti-ro.com

Subsidiary in the Netherlands

REALTEC-NL Amsterdam
home@realtec-nl.com

Subsidiary in Belgium

REALTEC-BE Bruxelles
home@realtec-be.com

